

4th Annual

SCCAPE

Sickle Cell Care Coordination for
Achieving Patient Empowerment



March 27-28, 2023
VIRTUAL

Course Director: Dr. Wally Smith, MD
Joan Corder-Mabe, RN, MS, WHNP
Shirley Johnson, LSW
Daniel Sop, MS
Program Manager: Erica Ford, M.Ed

March 30-31, 2023
IN-PERSON
at the Larrick Student
Center (VCU Campus)
Richmond, VA



 **VCUHealth**
SCCAPE
www.sccape.org

Jointly Provided by the University of Virginia School of Medicine and School of Nursing and
the Virginia Commonwealth University.

COURSE DESCRIPTION

The Sickle Cell Care Coordination for Achieving Patient Empowerment Conference is a 4-day, multidisciplinary course for **physicians, physician assistants, nurses, social workers, psychologists, community health workers, patients, and their families** designed to provide the knowledge and skills needed for participants to understand and optimize the role of a sickle cell disease health navigator (SCD HN) or work in a sickle cell medical care team. This interprofessional activity prepares allied health professionals, community-based staff, and volunteers to work together to improve patient outcomes. The program includes topics on the **US healthcare delivery system, sickle cell disease and its treatments, racism and health disparities, communication techniques, mental health, transition and community-based organizations** and much more!

DESIRED OUTCOMES

At the conclusion of the educational activity, learners will be able to:

- Review sickle cell disease pathology, complications, treatments, and the impact on patients' general health and lifestyle.
- Review the impact of Covid-19 on the care and health of patients with sickle cell disease.
- Describe the role and responsibilities of a sickle cell disease health navigator or medical care team member working with patients as the other comorbid conditions including psychosocial issues.
- Demonstrate effective communication using techniques such as motivational interviewing based upon knowledge of models such as adult learning theory, health belief model and the transtheoretical model.
- Discuss the impact of racism, complicit and implicit bias and health disparities on the health of patients diagnosed with sickle cell disease.
- Describe the U.S. health care delivery system, including the roles of direct providers, allied health professionals, and members of the public health infrastructure.
- Identify the network of sickle cell disease services for referral and resources in the communities they serve.
- Review the principles of HIPPA requirements, confidentiality, and ethical boundaries between patients and health navigators as it relates to sickle cell disease health care.
- Explore a variety of strategies of health navigators or medical team members which can be used to obtain healthy lifestyles and become more self-sufficient.
- Discuss how a sickle cell medical home is developed and describe the critical components of a program.

REGISTRATION & HOTEL INFO

REGISTRATION AND PAYMENT are available at www.cmevillage.com (visit our *Learning Portal* or *Upcoming Events*). Registration will close mid-night on **March 19, 2023**. **NO WALK IN REGISTRATION**. The course syllabus will be available online only the week of the conference until 30 days after the conference.

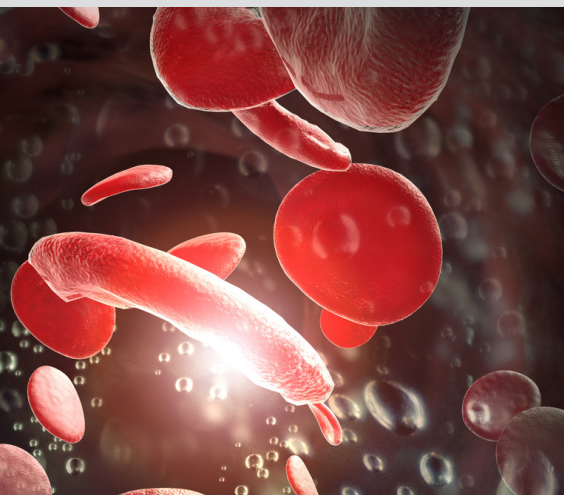
Event Days	Day 1 & 2 (Virtual)	All 4 Days (Virtual & In-person)
Physicians	\$250	\$400
Other Healthcare Providers	\$175	\$300
Community Health Workers/ Patients/CBOs/Student	\$75	\$75

Please Note: Policies on cancellation, payment methods and accommodation requests can be found on our website under FAQs. Additional questions, please contact uvacme@virginia.edu or 434-924-5310.

HOTEL RECOMMENDATIONS:

- Courtyard Richmond Downtown: 1320 E Carey St, Richmond, (804) 754-0007
- Hilton Richmond Downtown: 501 E Broad St, Richmond, (804) 344-4300
- Delta Hotels Richmond Downtown: 555 E Canal St, Richmond, (804) 788-0900
- Richmond Marriot: 500 E. Broad St, Richmond, (804) 965-9500

International Travelers: Please register for the conference and then contact Erica Ford (erm4d@uvahealth.org) for documentation needed for a travel visa.



AGENDA

DAY 1 Monday, March 27, 2023 (Virtual)

8:15	Welcome & Announcements	Shirley Johnson
8:30	Overview of Sickle Cell Disease	Dr. Thokozeni Lipato
9:30	Sensory, Neurological, and Cognitive Aspects of Pain	Daniel Sop
11:00	BREAK	
11:15	Medical Complications of Sickle Cell Disease	Dr. India Sisler
12:00	Treatment of Sickle Cell Disease	Dr. Thokozeni Lipato
1:00	Curative Therapies for Sickle Cell Disease	Dr. J Krieger
1:30	LUNCH	
2:00	Applying the Science of Race and American Culture	Dr. Wally Smith
2:30	Social Determinants of Health and Racism	Dr. Steven Woolf (virtual)
3:15	BREAK	
3:25	Diversity, Equity, and Inclusion in Sickle Cell Disease	Dr. Wally Smith
	How to Develop Solutions	
4:30	Q&A Panel	Dr. Wally Smith
5:00	Adjourn	

DAY 2 Tuesday, March 28, 2023 (Virtual)

8:15	Icebreaker	Shirley Johnson
8:30	US Blueprint for Sickle Cell Disease	Dr. Wally Smith
9:30	Communication with Stakeholders: Making Your Message Count	Ben Jaworowski
10:00	The Sickle Cell Disease Team including the Significance of Social Workers	Shirley Johnson, Rachel Walls
11:00	BREAK	
11:10	Transition from Pediatric to Adult Processes	Dr. El-Amin, Rachel Walls, Raven Hines (Case Scenarios)
1:00	LUNCH	
1:30	Mental Health Challenges for Patients with Sickle Cell Disease	Rachel Walls
2:30	Living a Healthy Life with Sickle Cell Disease	Mica Ferlis
3:00	BREAK	
3:05	Physical Activity in Patients with Sickle Cell Disease	Dr. Suzanne Ameringer, PhD
3:35	Burnout, Compassion, and COVID-19 Fatigue	Dr. Lori Crosby, PhD (virtual)
4:30	Q&A Panel	Joan Corder-Mabe
5:00	Adjourn	

DAY 3 Thursday, March 30, 2023 (In-Person)

8:00	Introduction & Icebreaker	Joan Corder-Mabe
8:30	Categories of Community Health Workers and Their Functions	Joan Corder-Mabe
10:15	Case Management Supervision, Daily Operation of PN Program including evaluation data, documentation, etc.	Shirley Johnson
		Marla Brannon, Joan Corder-Mabe
12:15	LUNCH (provided)	
12:45	Effective Communication Techniques: MI, Imessages & Reflective Listening	Joan Corder-Mabe
1:45	How to Develop and Lead a CBO	Rae Blaylark
2:30	BREAK	
2:45	Nuts and Bolts of CBO	Shirley Johnson
3:15	CBO and Social Media Panel	Tiffany Dews, Dionne Bobo
3:30	Confidentiality	Shirley Johnson
4:15	Meditation and Q & A Panel	Rachel Walls
4:45	Adjourn	

DAY 4 Friday, March 31, 2023 (In-Person)

8:15	Icebreaker	Rachel Walls
8:30	How do you talk with your doctor? Expectations of a visit to an adult ED care.	Dr. Pete Moffett (Virtual), Mica Ferlis
9:30	Breakout Groups: Case-Based Scenarios Through a Cultural Lens	Joan Corder-Mabe, Shirley Johnson, Mica Ferlis
10:45	BREAK	
11:00	Health Education and Health Literacy	Joan Corder-Mabe
11:45	Social Media in Today's World to Send our Message	Raven Hines
12:30	LUNCH (provided)	
1:00	Relationship Building Patient Experience	Shirley Johnson, Haylee Hartzog
2:00	Community Assessment and Community Engagement	Joan Corder-Mabe
3:00	Q&A, Closing Remarks	Dr. Wally Smith
3:15	Adjourn	

VCU FACULTY

Suzanne Ameringer, PhD, RN, FAAN
Professor
Florence E. Elliott Professor
Associate Dean for Academic Affairs
VCU School of Nursing

Nadirah El Amin, DO, MPH
Assistant Professor
Division of Pediatrics
Department of Hematology/Oncology

Rae Blaylark
President/CEO
Sickle Cell Foundation of Minnesota

Dionne Bobo
Founder of Living with Sickle Cell In.
Director of Social Media for Life and Family Foundation of VA

Marla Brannon, BSW*
Patient Navigator

Joan Corder-Mabe, RN, MS, WHNP*
Research Assistant

Tiffany Dews
CBO
Life and Family Foundation

Mica Ferlis, MSN, RN, ACNP-BC
Acute Nurse Practitioner –
VCU Sickle Cell Medical Home

Haylee Hartzog
MSW Intern

Raven Hines, B.S, C.H.E.S
Transition Coordinator
Division of General Internal Medicine

Ben Jaworowski*
Business Intel Analyst II

Shirley Johnson, LSW*
Sickle Cell Research Operations Manager/Patient Navigator Supervisor
Division of General Medicine

Elizabeth Krieger, MD
Assistant Professor of Pediatrics
Pediatric Hematology, Oncology, and Stem Cell Transplantation
Children's Hospital of Richmond at VCU Health

Thokozeni Lipato, MD
Assistant Professor
Infusion Medical Director
Division of General Internal Medicine

Pete Moffett, MD, FACEP
Residency Program Director
Associate Professor of Emergency Medicine
Department of Emergency Medicine

India Sisler, MD
Associate Professor
Clinical Director, Division of Pediatric Hematology/Oncology and Stem Cell Transplantation
Medical Director, Pediatric Comprehensive Sickle Cell Program, Children's Hospital of Richmond at VCU

Wally Smith, MD*
Florence Neal Cooper Smith Professor of Sickle Cell Disease
Scientific Director, VCU Center on Health Disparities
Director, VCU Adult Sickle Cell Program

Daniel Sop, MS*
Senior Clinical Research Scientist
Division of General Internal Medicine

Rachel Walls, LCSW*
Adult Licensed Clinical Social Worker

Steven Woolf, MD
Professor C. Kenneth and Dianne Wright Distinguished Chair Population Health
Health Equity Director
Emeritus and Senior Advisor, VCU Center on Society and Health, Virginia Commonwealth University School of Medicine

UVA

Erica Ford, M.Ed*
CE Program Manager

CCHMC

Lori E. Crosby, PsyD
Professor of Pediatrics
Co-Director Faculty DEI
Cincinnati Children's Hospital Medical Center

**denotes Planning Committee Member*

CONTACT INFO

Erica Ford
CE Program Manager
Office of Continuing Medical Education
Erm4d@uvahealth.org
434-924-5310

ACCREDITATION AND DESIGNATION STATEMENT



JOINTLY ACCREDITED PROVIDER™
INTERPROFESSIONAL CONTINUING EDUCATION

In support of improving patient care, this activity has been planned and implemented by Virginia Commonwealth University Health System and the University of Virginia School of Medicine and School of Nursing is jointly accredited by the Accreditation Council for Continuing Medical Education (ACCME), the Accreditation Council for Pharmacy Education (ACPE), and the American Nurses Credentialing Center (ANCC), to provide continuing education for the healthcare team.

The University of Virginia School of Medicine and School of Nursing maintains a record of participation for six (6) years.



The University of Virginia School of Medicine and School of Nursing has been authorized by the American Academy of PAs (AAPA) to award AAPA Category 1 CME credit for activities planned in accordance with AAPA CME Criteria.

This activity is designated for **28.5 AAPA Category 1 CME credits**. PAs should only claim credit commensurate with the extent of their participation.



AMERICAN
PSYCHOLOGICAL
ASSOCIATION

Continuing Education (CE) credits for psychologists are provided through the co-sponsorship of the American Psychological

Association (APA) Office of Continuing Education in Psychology (CEP). The APA CEP Office maintains responsibility for the content of the programs.

The University of Virginia School of Medicine and School of Nursing designates this live activity for a maximum of **28.5** continuing education hours.



As a Jointly Accredited Organization, The University of Virginia School of Medicine and School of Nursing is

approved to offer social work continuing education by the Association of Social Work Boards (ASWB) Approved Continuing Education (ACE) program. Organizations, not individual courses, are approved under this program. Regulatory boards are the

final authority on courses accepted for continuing education credit. Social workers completing this course receive **28.5** general continuing education credits.

Successful completion of this activity, planned in accordance with the needed MOC requirements, enables the participant to earn MOC Part II Self-assessment points equivalent to the amount of **AMA PRA Category 1™** claimed for the activity, through the American Board of Medical Specialties (ABMS) and Accreditation Council for Continuing Medical Education (ACCME®) joint initiative to create a wide array of Maintenance of Certification (MOC) Activities. The awarded transcript provides for both **AMA PRA Category 1™** and MOC II Self-assessment credit for the following participating boards:

- American Board of Internal Medicine (ABIM)
- American Board of Pathology (ABPath)

NOTE: It is the accredited provider's responsibility to submit learner completion information to the ACCME for the purpose of granting MOC II Self-assessment credit for the above boards. For learners wishing to receive credit through a Member Board not included above, please refer directly to your Member Board's MOC Part II Lifelong Learning and Self-Assessment Program Requirements.



IPCE CREDIT™

This activity was planned by and for the healthcare team, and learners will receive **28.5** Interprofessional Continuing Education (IPCE) credits for learning and change.

The University of Virginia School of Medicine and School of Nursing designates this live activity and PI CME for a maximum of **28.5 AMA PRA Category 1 Credits™**. Physicians should claim only the credit commensurate with the extent of their participation in the activity.

The University of Virginia School of Medicine and School of Nursing awards 28.5 contact hours for nurses who participate in this educational activity and complete the post activity evaluation.

The University of Virginia School of Medicine and School of Nursing awards **28.5 hours of participation** (consistent with the designated number of **AMA PRA Category 1 Credit(s)™** or ANCC contact hours) to a participant who successfully completes this educational activity.